

**F R E E D O M<sup>®</sup>**

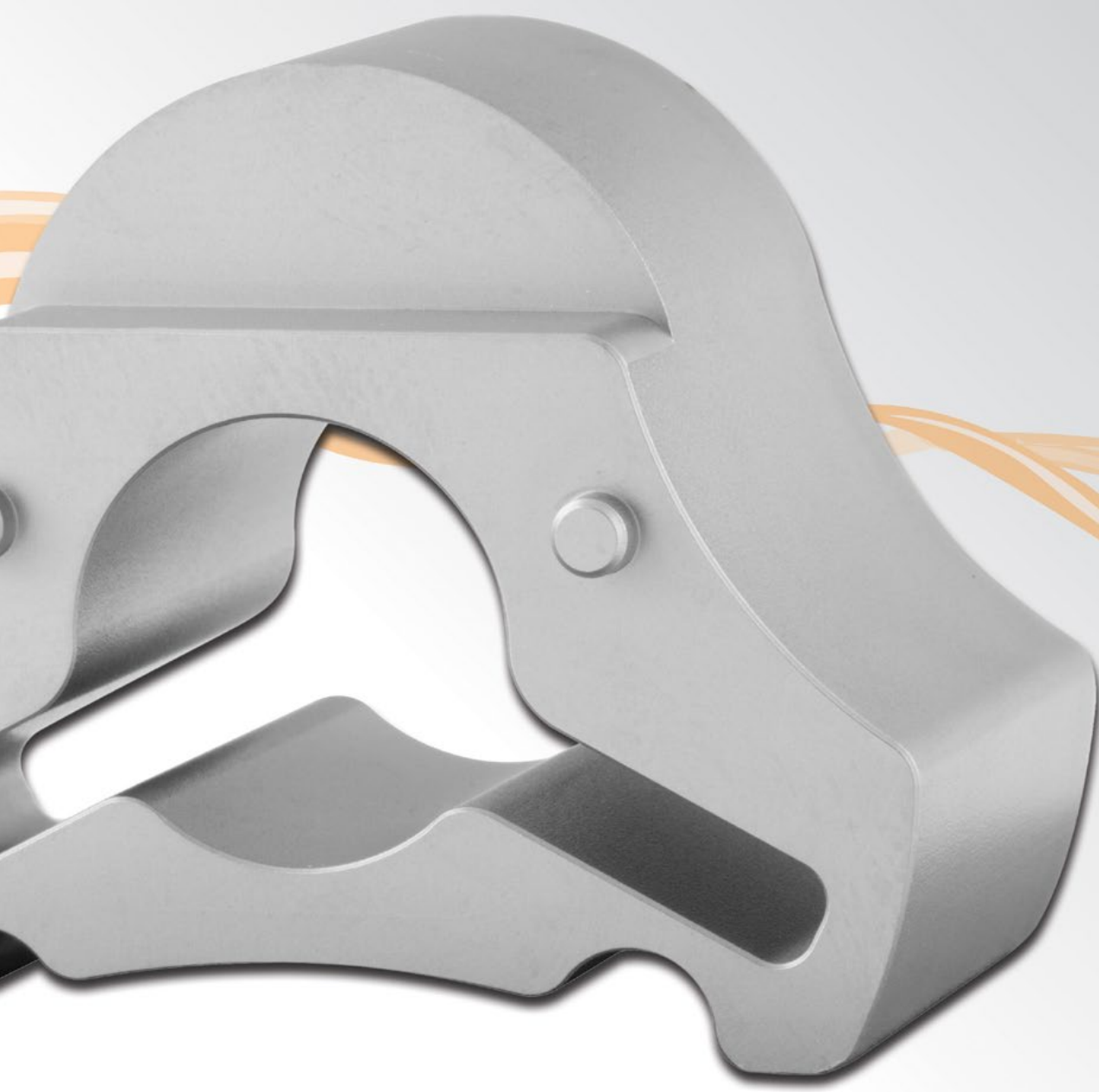


**K N E E**



## Instrumentation Guide





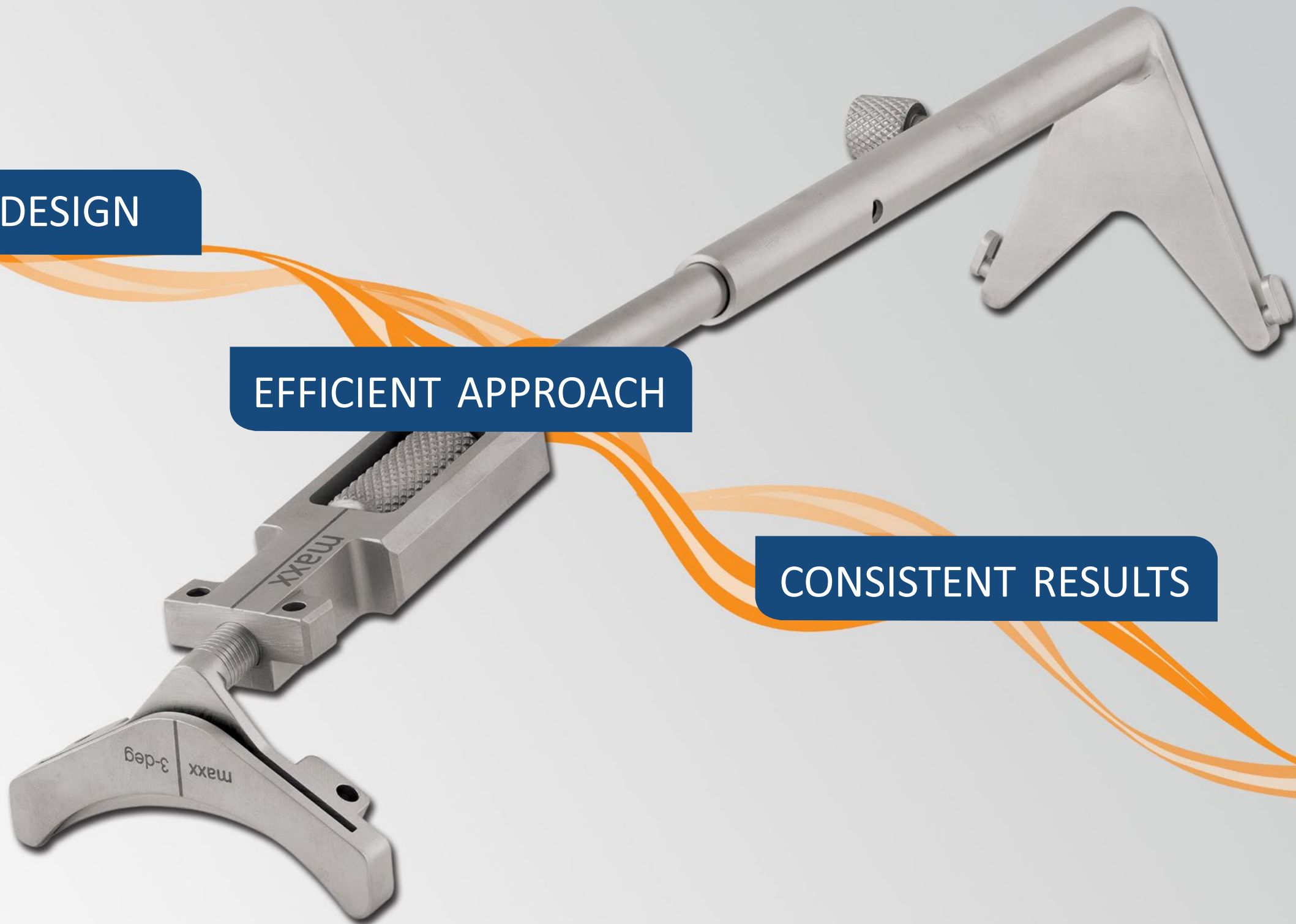
**DESIGN INNOVATION  
AND CONTINUOUS DEVELOPMENT**

**THAT DELIVERS  
HIGH PERFORMANCE AND SUCCESS**

INTUITIVE DESIGN

EFFICIENT APPROACH

CONSISTENT RESULTS



# INTUITIVE DESIGN

Developed to naturally follow and logically support surgical flow.



**Femoral A/P sizing guide** allows for rotational pin placement referencing the **5-in-1 cutting block** without repositioning.



Rapid-connect **pinning system** features pinslots specially designed to increase precision and decrease jig pullout.



**5-in-1 cutting block** allows for medial/lateral placement and anterior/posterior adjustability to accurately assess femoral component fit.



Both standard and optional cuts are available on the **distal femoral cutting guide** without repositioning, with additional +/- 2mm and 1mm slot options for more precision.



Uncomplicated **tibial cutting guide** enables quick gross adjustment and fine-tuning of the proximal face cut in millimeter increments.



Clear instrument labeling for intraoperative alignment and precision.



# EFFICIENT APPROACH

Strategically designed to minimize steps, while streamlining and supporting the entire surgical process.

One-piece **femoral A/P sizing guide** (no operating room assembly required). Reversible to accommodate both right and left orientation without the need for multiple instruments.

Reversible **distal femoral cutting guide** for both right and left knee.

The same instruments accommodate tibial preparation for the Freedom Knee® **PS, CR, all-poly** and **metal-backed tibial component** options.

**Distal femoral cutting guide** is fixed at 6° of valgus to allow for a reproducible distal femoral face cut with lower error rates, with 4° and 8° options for more complicated anatomy.

Anterior referencing **femoral A/P sizing guide** designed for 3° and 6° of external rotation of the femoral component allowing for one jig adaptation for varus and valgus knees.

**Tibial broach** is non-serrated to preserve bone.

**Tibial cutting guide** is fixed at 3° posterior slope to the mechanical axis of the tibia in the sagittal plane, with 0° and 6° options for actively managing flexion.

# CONSISTENT RESULTS

High performance instruments designed to inspire confidence and deliver reproducible results.

## STREAMLINED

significant reduction in the number of trays and quantity of instruments needed.

## INTUITIVE

instruments that are easy to master and use.

## LOGICAL

instrument tray layout representative of surgical steps.

## PRECISE

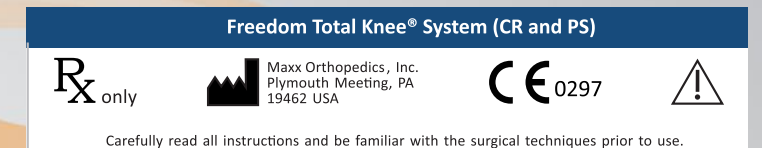
highly reproducible results while accommodating intraoperative variability.

## ACCOMMODATING

cross-platform flexibility across The Freedom Knee CR, PS, all-poly and metal-backed options.

The Freedom Total Knee® System maximizes component interchangeability to enable simpler implantation, reduce procedure time, facilitate minimally invasive surgical approaches and decrease the time required to expertly manipulate the system components.

**BETTER PERFORMANCE,  
IMPROVED PATIENT OUTCOMES.**



Please see the package insert for complete device description, product selection information, indications, contraindications, precautions, adverse effects, warnings, materials, sterilization and patient guidance associated with the Freedom Total Knee® System.

**CAUTION:** THIS DEVICE IS RESTRICTED TO SALE BY OR ON THE ORDER OF A LICENSED PHYSICIAN

**WARNING:** THIS DEVICE IS INTENDED FOR CEMENTED USE ONLY

Maxx Orthopedics, Inc. is the manufacturer of the Freedom Total Knee® System.

# Pursue Life™



For more information about Freedom Knee®  
please contact your local representative.

Freedom Knee® is manufactured by Maxx Orthopedics, Inc. FREEDOM and FREEDOM KNEE are Registered Trademarks of Maxx Orthopedics, Inc.

© 2012 Maxx Orthopedics. All rights reserved. Updated January 2012.

[maxx](http://www.maxxmed.com) [www.maxxmed.com](http://www.maxxmed.com)

Maxx Orthopedics Brochure No. MXO-MP00006-R04