

Capturer 7F

thrombus extraction catheter

Precise Positioning

Extraordinary extraction
capacity

Excellent pushability
and trackability

Durable **HYDROPHILIC**
coating

- RX (0,014")
- Usable catheter length: 140 cm
- Aspiration speed: 2,34 cc/s
- Low entry profile 0,030"
- 7F compatible



Structure

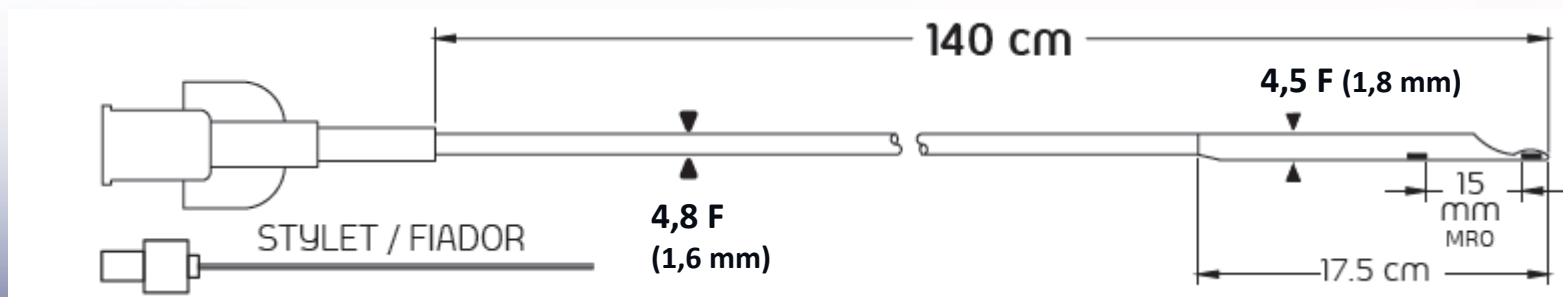
- Capturer is a rapid exchange catheter, having a single proximal lumen and a double distal lumen.
- The catheter is compatible with 0,014 inch / 0,36 mm guidewire.

The larger lumen

- runs the length of the catheter from its proximal end to its distal part end
- is intended for the removal of the thrombus when connected to one of the syringes included in the system

The smaller lumen

- the most distal 17,5 cm of the catheter is able to accommodate the guidewire facilitating advancement of the catheter to the area that must be treated.



Product features: proximal shaft

✓ ONE INNER LUMEN

- Circular section for maximum extraction area.
- Flat wire mesh high pushability and less kinking
- Outer diameter (OD) of 1.6 mm compatible with 7F guiding catheter
- Optional stiffening mandrel for increased pushability
- Continuous inner PTFE layer improves the thrombus glide



Product features: distal shaft

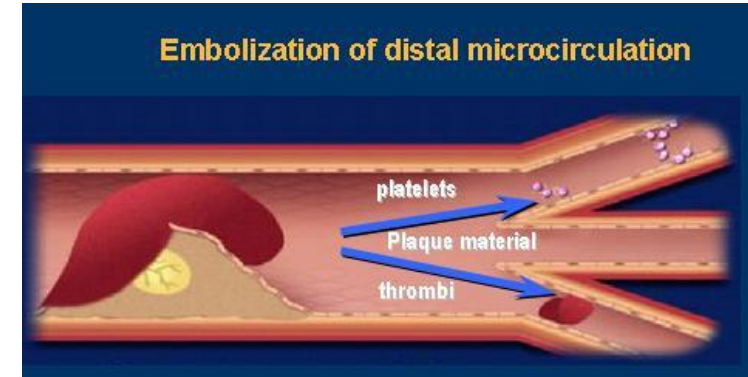
✓ DOBLE LUMEN

- Transition proximal-distal: smooth exit port compatible 7F guiding catheter
- Tip:
 - Entry ability
 - Specially designed for always having extraction capacity
- Beveled exit port
 - Easy removal of guidewire and avoids lose of compatibility with guiding catheter
- Polymeric radiopaque markers
 - At the tip and at 15 mm for measuring the lesion
 - More flexibility of the catheter and better entry capacity
- Hydrophilic coating for enhanced trackability
- Outer diameter of 1.8 mm for 7F compatibility

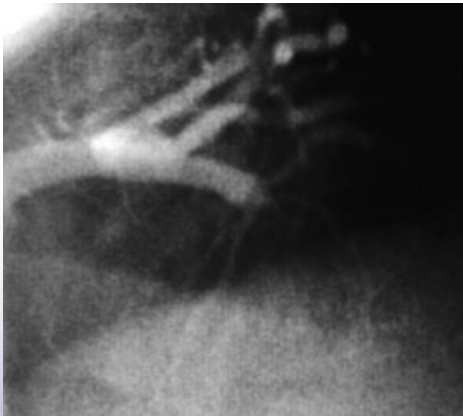


Indications

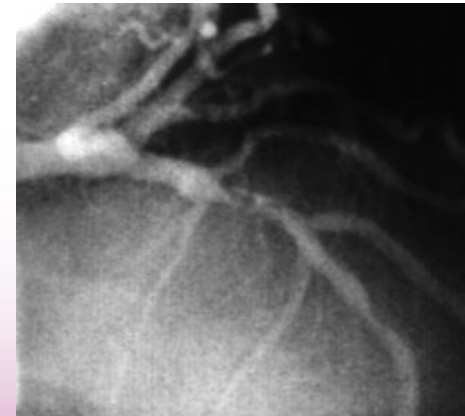
- Removal of fresh, soft emboli and thrombi from **coronary or peripheral** vessels, of at least 2mm diameter.



Before



After



Benchmark

Product	Company	Sizes
Export Advance Export AP	Medtronic	6F 7F
Pronto V4	Vascular Solutions	5,5 – 6 – 7 – 8F
Eliminate	Terumo	6 – 7 – 8F
Hunter	IHT	6F
Thrombuster II y III	Kaneka	6 – 7F
Fetch II	Medrad	6F
Quickcath	Spectranetics	6F
ASAP	Merit Medical	6F
Stentys	Stentys	6F
Capturer	iVascular	6F – 7F

- All thrombus aspiration devices available on the market claim to feature a high capacity to reach the thrombus, due to:
 - Variable mesh → pushability / trackability
 - Stiffening mandrel → no kinking
 - Hydrophilic coating
- Only a few of them have a high **extraction** capacity.



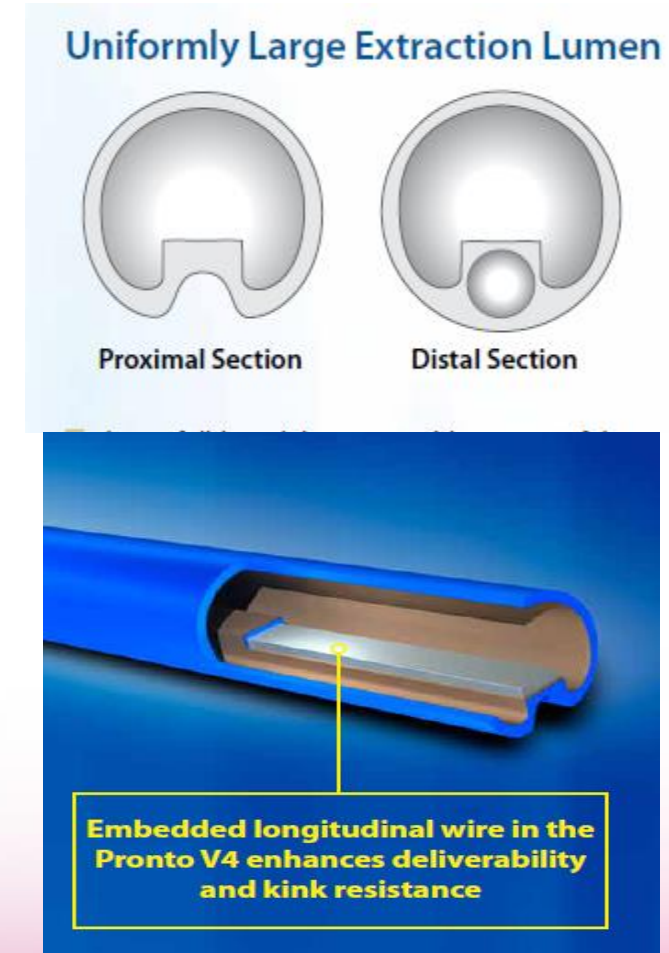
Medtronic: Export AP

- Export AP - Medtronic
 - Antecessor of Export Advance
 - Variable wire mesh to obtain variable flexibility
 - NO stiffening mandrel to avoid kinking
 - NO hydrophilic coating



Vascular Solutions: Pronto V4






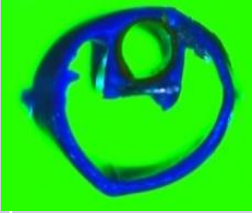
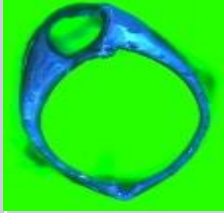
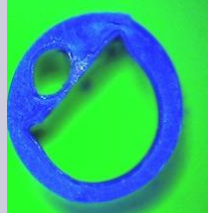
- Pronto V4 – Vascular Solutions
 - Incorporated stiffening mandrel fixed in transition area to prevent kinking
 - Hydrophilic coating
 - Big extraction area


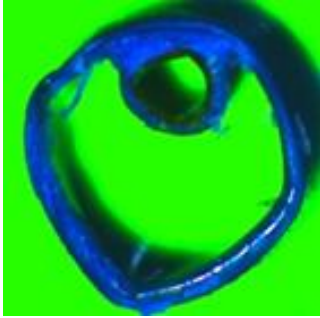



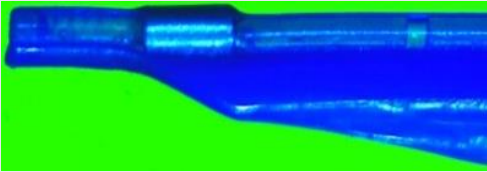
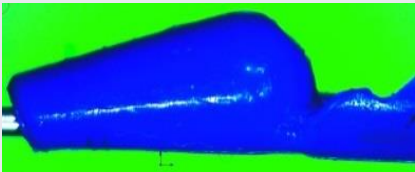
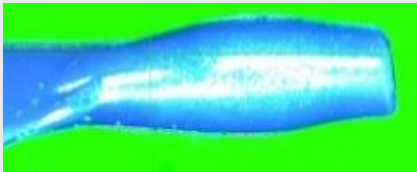
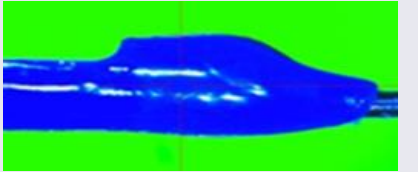
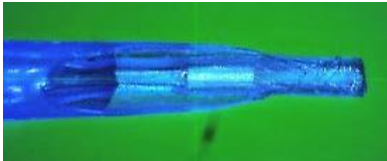
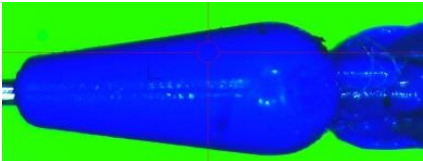
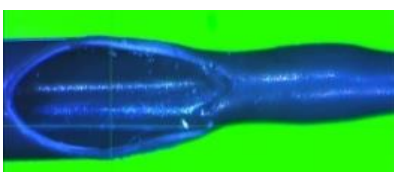
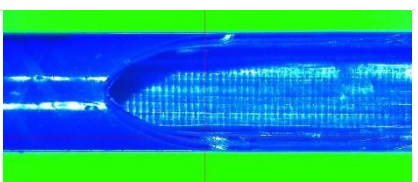
Terumo: Eliminate

- Eliminate - Terumo
 - Fully meshed
 - Anti-kinking stylet included
 - Small distal mark for better navigation
 - Hydrophilic coating



	Export 7F	Pronto V4 7F	Eliminate 7F	Capturer 7F
PROXIMAL				
OD (mm)	1,60	N.A	1,30	1,60
DISTAL				
OD (mm)	1,91 / 1,60	1,90 / 1,84	1,84 / 1,45	1,82 / 1,80
Structure	Flat wire mesh	No wire mesh (proximal). Helical wire mesh (distal)	Rounded wire mesh	Flat wire mesh
Stylet	NO	YES	YES	YES
RX length (mm)	9,5	22	42,3	17,5
COF	N.A	0,0524	0,0550	0,0360

	Export 7F	Pronto V4 7F	Eliminate 7F	Capturer 7F
Proximal extraction area (mm2)	1,28	1,45	1,32	1,39
Distal extraction area (mm2)	1,24	1,45	1,32	1,20
Aspiration speed (cc/s)	2,05	2,33	2,33	2,34
				
Distal mesh	YES	COIL	YES	YES
Proximal mesh	YES	YES	YES	YES

	Export AP 7F	Pronto V4 7F	Eliminate 7F	Capturer 7F
Tip				
Length (mm)	1	0,8	1	1
OD distal (mm)	0,35	1,70	0,85 – 0,62	0,89
Bevel				
Radiopaque Markers	Metallic	Metallic	Metallic	Tungsten
Distance tip – marker (mm)	1,56	2,60	2,00	0,20

		Export 7F	Pronto V4 7F	Eliminate 7F	Capturer 7F
Trackability	Distal flexibility (mN)	1173,3	1585,6	1099	896,6
	Stylet distal penetration	NO	YES	YES	YES
	7F compatible	YES	YES	YES	YES
	Hydrophillic	NO	YES	YES	YES
Pushability	Stylet (anti-kinking)	NO	YES	YES	YES
	Proximal flexibility (mN)	2636,0	1323,1	5075,1	3136,5
	Proximal mesh	YES	YES	YES	YES
Extraction capacity	Speed (cc/s)	2,05	2,33	2,33	2,34
	Proximal mesh	YES	YES	YES	YES
	Distal mesh	YES	COIL	YES	YES

Key selling points

- ✓ **Anti-kinking stylet design:**
 - Flat wire mesh, stiffening mandrel
- ✓ **High pushability:**
 - Variable pattern of wire mesh in order to reach **distal flexibility** and **proximal pushability**
- ✓ **Outstanding trackability:**
 - Hydrophilic coating
 - Flexibility of materials
- ✓ **Advanced tip design** that avoids complete blockage of the catheter lumen